

PRIME SUSTAINABLE VILLAGE

Living is an endless beginning.

From dawn till dusk, every minute is a rebirth.

*Walking barefoot on the soil, grabbing the first rays
of the sun, and growing closer to nature, knowing
that living can be pure and transformative.*

To your world and to our planet.

*That is why we are mindfully sustainable
in designing every home, garden, energy source,
and detail. It's more than a choice,
it's a responsibility we proudly embrace.*

*Side by side with the Algarve's best life -
from beach to nightlife, sports, and school -*

*we are committed to preserving the
region's natural uniqueness so you can
enjoy endless joyful moments.*

Because that's the very nature of life.

VILAMOURA

VILAMOURA / ALGARVE



a:r'keɪə/ 1. derived from "archaea" in Latin. 2. in science, it is possibly the most primitive form of life - dating back 3.5 billion years and offering clues about Earth's initial conditions; ubiquitous across all organisms and habitats, it plays enigmatic roles in nutrient cycles, while its adaptability contributes to the planet's ecological resilience. 3. to us, it symbolizes a pure tribute to a sustainable restart in the Algarve. 4. to you, it resonates as the very nature of life, where every minute is a rebirth.



LIVING IS AN
ENDLESS
BEGINNING.
FROM DAWN TILL
DUSK, EVERY
MINUTE IS
A REBIRTH.

WALKING BAREFOOT ON
THE SOIL, GRABBING THE
FIRST RAYS OF THE SUN,
AND GROWING CLOSER TO
NATURE, KNOWING THAT
LIVING CAN BE PURE AND
TRANSFORMATIVE.

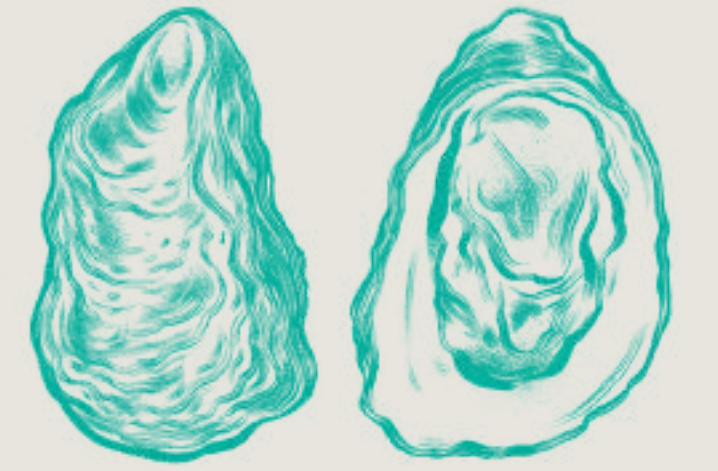


TO YOUR
WORLD
AND TO OUR
PLANET.



*That is why we are
mindfully sustainable in
designing every home,
garden, energy source,
and detail.*

*It's more than a choice;
it's a responsibility we
proudly embrace.*



SIDE BY SIDE
WITH THE
ALGARVE'S
BEST LIFE

*- from beach to nightlife,
sports, and school - we are
committed to preserving
the region's natural
uniqueness so you can enjoy
endless joyful moments.*

BECAUSE THAT'S
THE VERY NATURE
OF LIFE.







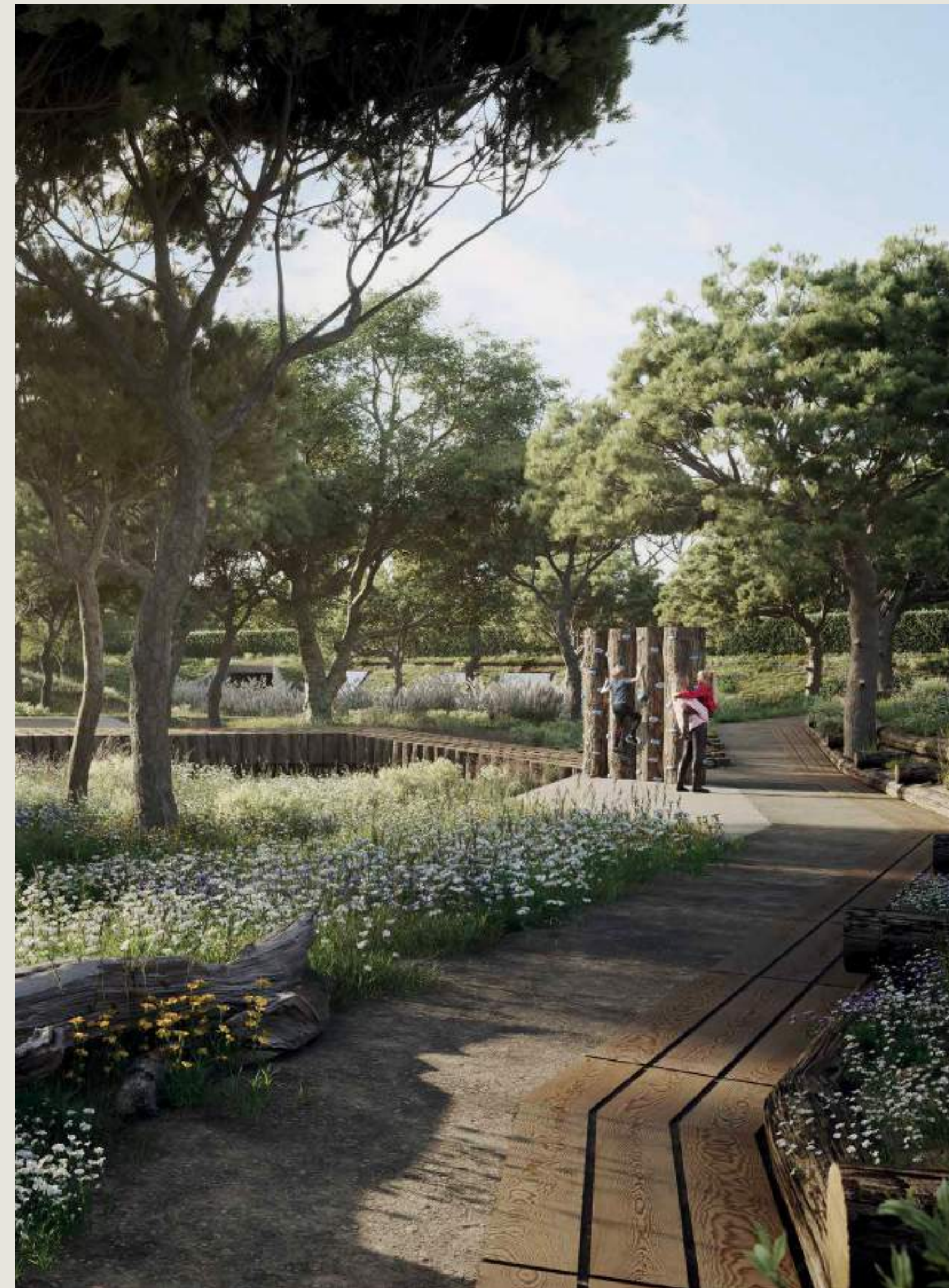
NightingaleScript

THE VERY NATURE

olive tree / 'd. v tri: / 1. "olea europaea" in Latin. 2. it stands as an iconic symbol of the Mediterranean region. 3. it is an integral part of Arcaya's indigenous flora. 4. it thrives on minimal water and it can flourish for over a hundred years, offering a great shade to rest under. 5. its fruit is the olive, an integral part of traditional and contemporary Portuguese gastronomy.

Olive Tree

OF LIFE





ARCAYA RESTORES THE ALGARVE'S NATURAL GLORY, LEADING ITS SUSTAINABLE TRANSFORMATION AND CREATING A FULL LIVING DESTINATION.

Arcaya is more than a real estate project - it's a sustainable transformation in the heart of the Algarve. With a focus on eco-friendly construction and practices, it aims to create the ultimate year-round living destination.

Nestled amidst the forest, your prime sustainable home offers an unparalleled immersion in nature, with pure respect for it. Here, you and your family will indulge in moments spent by your private pool, savor culinary delights at the club's restaurants, rejuvenate at the wellness center, and explore numerous natural paths and pure water gardens.

Surrounded by nature, your daily needs - from groceries to bike rides - are just a pleasant stroll away. And while the vibrant energy of Vilamoura's beaches, urban scene, nightlife, and signature golf courses may seem a world apart, they're reachable with just a quick 5-minute drive, offering the perfect balance of serene seclusion and cosmopolitan indulgence.



Terracota Villa



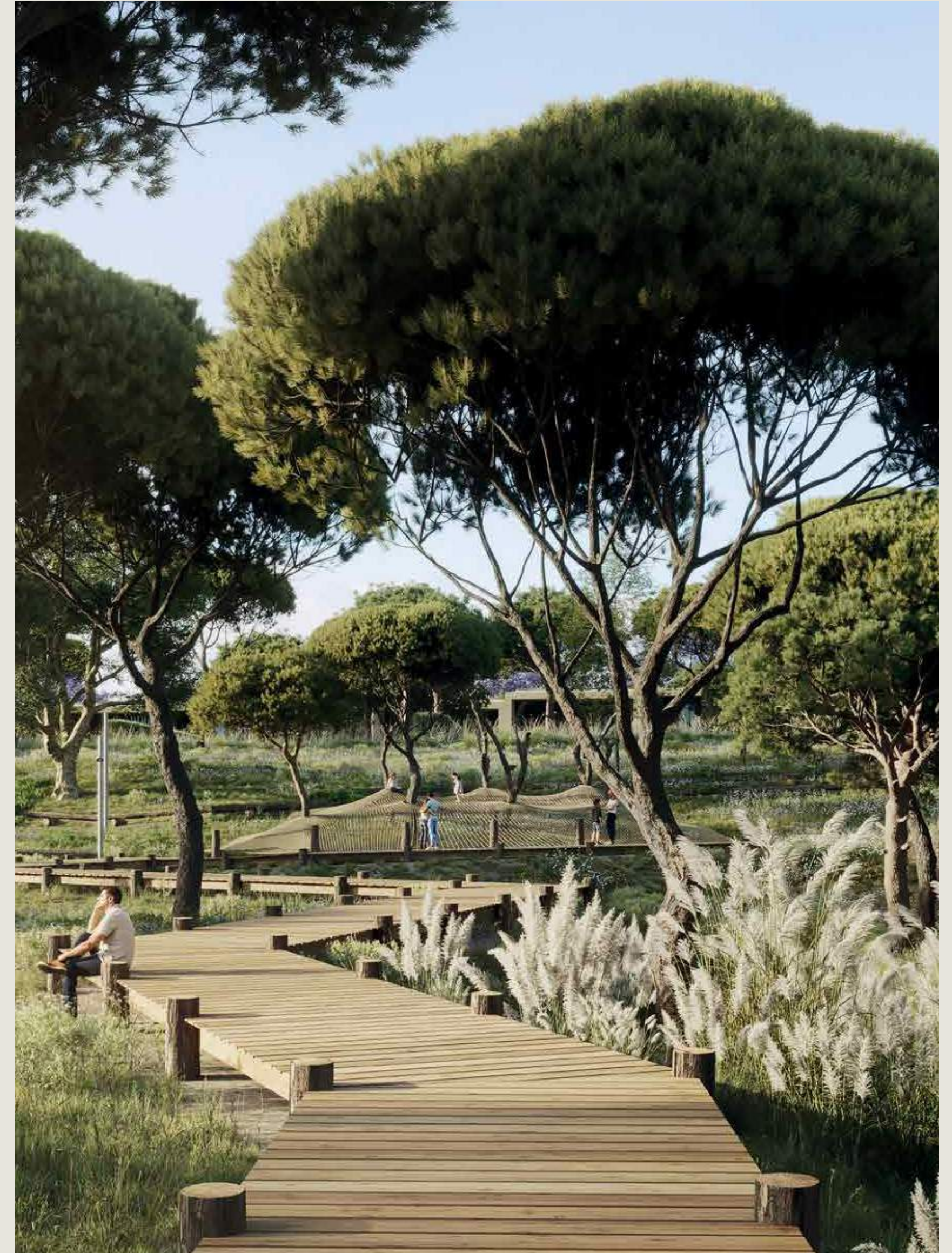


WELCOME TO ARCAYA,
YOUR PRIME SUSTAINABLE
VILLAGE AND COMMUNITY
WHERE EVERYTHING
WAS DESIGNED FOR YOU,
YOUR FAMILY, AND THE
GENERATIONS TO COME.
ENSURING IT IS THE BEST
WAY TO RESTART YOUR LIFE
AND OUR PLANET.

THE VERY NATURE OF SUSTAINABILITY.

Bee

bee / bi: / 1. "apicula" in Latin. 2. there are over 20,000 species of bees.
3. bees play a significant role in pollinating cultivated fields and wild plants -
by transporting pollen grains on their hairy bodies. 4. and, of course, bees are
revered as the architects of one of nature's most exquisite treats: honey.



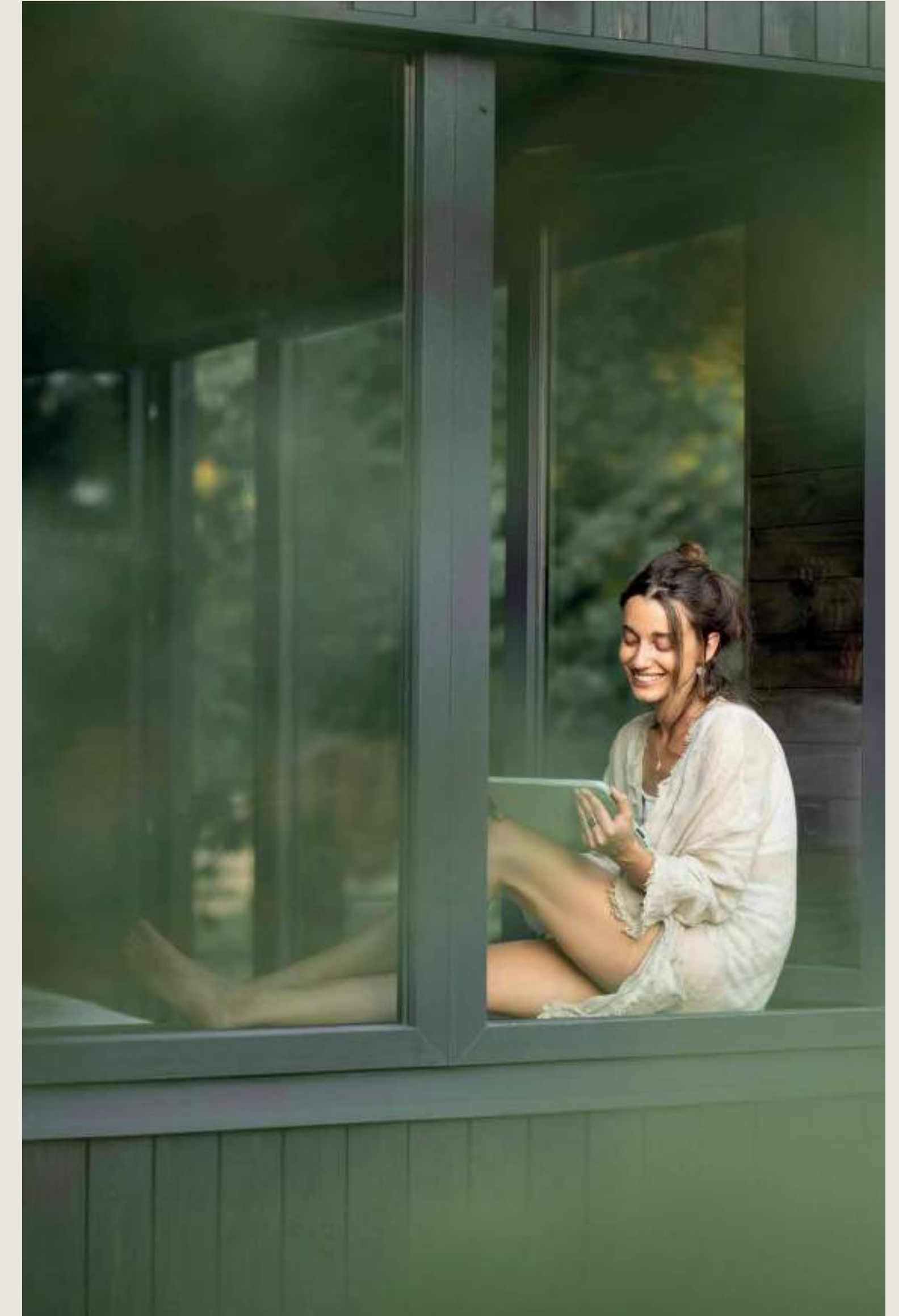
YOUR PRIME
SUSTAINABLE
VILLAGE,
SURROUNDED BY
UNSPOILED NATURE,
IS GROWING FOR YOU,
RESPECTING
THE LOCAL FLORA
AND FAUNA, AS WELL
AS THE PLANET
AS A WHOLE.



Terracota Villa



Terracota Villa





Anchored on the land's natural elements by minimizing human intervention, preserving every tree, fostering the proliferation of indigenous species, and restoring natural ecosystems, Arcaya will cultivate an authentic living experience deeply rooted in nature.

HAVING ECOSYSTEM PRESERVATION IN MIND (AND AT HEART),
ARCAYA PIONEERS A NEW ERA OF SUSTAINABILITY, SPEARHEADING
THE ALGARVE'S PURE TRANSFORMATION THROUGH INNOVATIVE
CONSTRUCTION PRACTICES CENTERED AROUND:

. *Wooden structure*

Wood is an environmentally friendly and recyclable material boasting a minimal carbon footprint. It serves as a natural moisture regulator, mitigates foundation impact on the soil, and offers a lightweight system ideal for prefabrication and transportation, embodying sustainability at its core.

. *Off-site construction*

Arcaya Homes are meticulously crafted to withstand the test of time, employing the highest quality materials and optimized construction techniques to ensure unparalleled durability and longevity.

Our off-site and indoor construction process stands as a beacon of quality assurance within a controlled environment. Shielded from the whims of the weather, it ensures schedule certainty and safeguards materials and modules, preserving their inherent integrity. Moreover, it offers accelerated timelines, minimal on-site disruption, and significant reductions in material waste and carbon footprint, all while prioritizing the safety of our workers.

From its inception through planning, construction, and everyday use, your Arcaya home embodies sustainability, boasting optimal energy efficiency at every stage of its lifecycle.

Arcaya proudly champions sustainability in the Algarve, committing to reduce our ecological footprint and preserve our planet's delicate balance.

Timber Villa





BUT THERE IS MORE. EVERY DETAIL WAS DESIGNED WITH SUSTAINABILITY AT ITS CORE:

- . *Strategically planted trees offering dual benefits: providing cooling shade during hot summers and serving as natural insulation to capture warmth during chilly winters;*
- . *Biophilic roof fostering biodiversity;*
- . *Pergolas and porches designed to offer shaded outdoor areas and naturally ventilated spaces;*
- . *Photovoltaic panels harnessing solar energy;*
- . *Utilization of rainwater and greywater for household needs.*



WE ARE PROUD TO WORK EVERY DAY TO MINIMIZE THE ENVIRONMENTAL FOOTPRINT OF OUR NEW BUILDINGS THROUGHOUT THEIR LIFE CYCLE, AIMING TO OBTAIN THE BREEAM CERTIFICATION IN THE NEAR FUTURE.

THE VERY NATURE OF CONSCIOUS ARCHITECTURE.

COMMITTED TO THE ENVIRONMENT, BATLLEIROIG'S ARCAYA PROJECT EMBRACES THE PRESENT, ENVISIONING THE FUTURE.



Almond Tree

almond tree / m ʃlw ɪr d/ 1. "prunus dulcis" in Latin. 2. with deep and extensive roots, it grows and withstands dry and semi-arid climates. 3. it is an early bloomer - between January and March - and gets covered with white and pinkish flowers. 4. its fruit is actually a seed used in several traditional (and irresistible) sweet recipes.

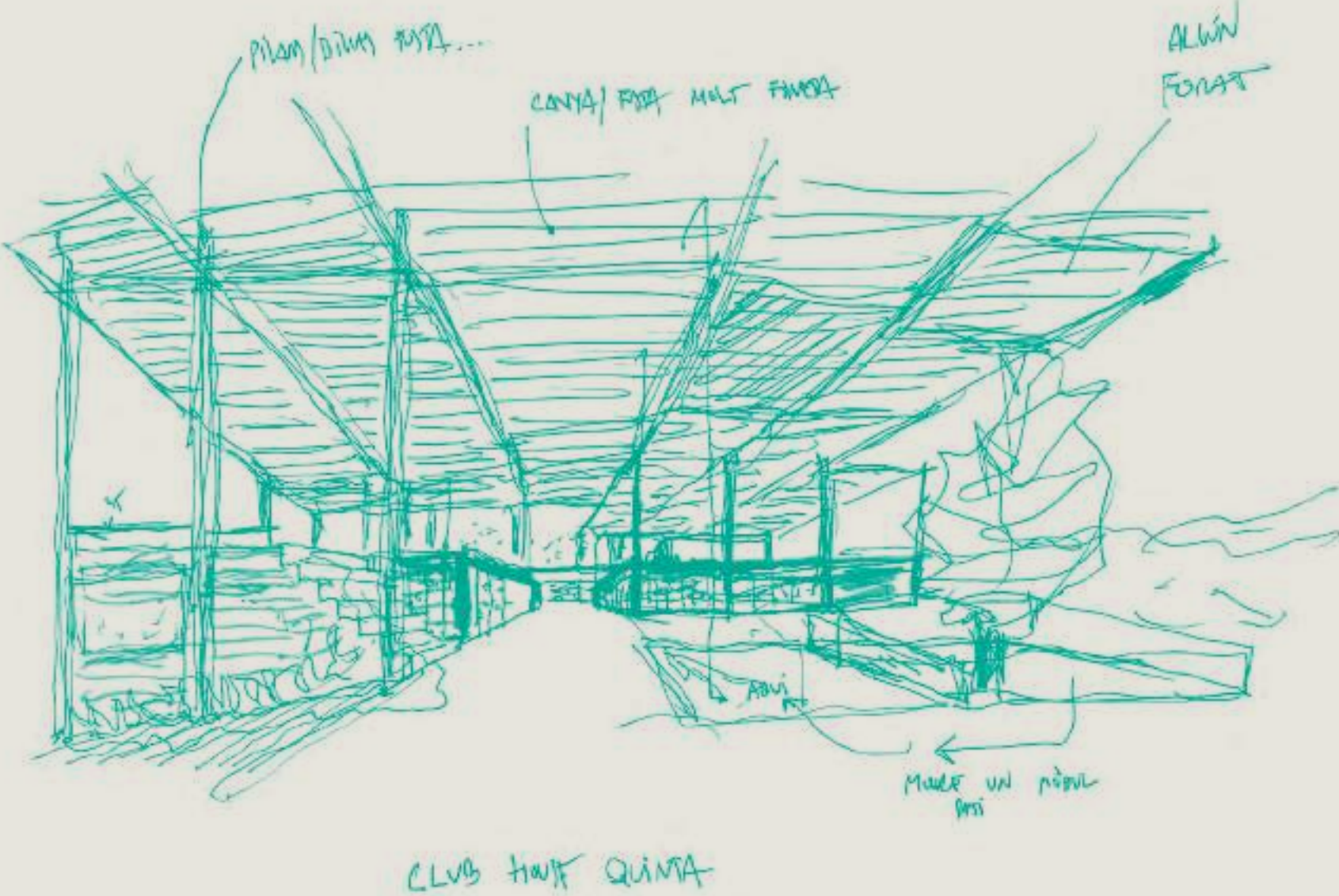


Given that sustainability is not merely an option but a fundamental design principle at Arcaya, Batlleiroig was the ideal partner to design this luxury residential community that pioneers a groundbreaking approach to sustainability.

Batlleiroig is a Spanish multidisciplinary office that provides services in Planning, Landscaping, and Architecture. The firm was founded over 40 years ago, has over 160 employees, and has 30 national and international awards, ensuring a successful track record in designing and delivering sustainable projects in Spain and abroad for various asset classes. Its work is committed to the environment by "merging city & nature" and involves searching for solutions for the planet's environmental and climate preservation.

To Batlleiroig, luxury is synonymous with experiencing unparalleled comfort within meticulously crafted, high-quality environments. Therefore, this project enhances nature to provide comfort and uses nature-based solutions to design resilient landscapes and sustainable architectures.

The core concept of the masterplan is strongly anchored on the existing flora and water elements by preserving all its trees and minimizing human intervention, potentiating the growth of local species and bringing back natural ecosystems, to not only create a true sense of living in nature, but also cultivating a cohesive community united by these principles, elevating sustainability to unprecedented heights.



THE VERY NATURE OF PRIME REAL ESTATE.

ARCAYA HOMES ARE NATURALLY
GROWING FOR YOU.

Lavender

- lavender / 'læv n dər / 1. "lavandula stoechas" in Latin.
2. It grows in temperate climates and is used as an
ornamental plant, culinary herb, and for its essential oils.
3. its name is also a color that naturally paints our landscape.





Timber Villa



Sand Villa



Arcaya Homes offer an unparalleled blend of indoor and outdoor living spaces. Our prime sustainable homes encompass around 240sqm of gross construction area, nestled within plots spanning from 1,000sqm to 2,000sqm. With expansive outdoor areas, comprising gardens and terraces, you'll live the very essence of nature alongside with the ultimate modern comfort.

Terracotta, Timber, and Sand are the three signature homes you'll find in Arcaya's first launch. They all feature up to four bedrooms and a private pool and are open to customization to suit your preferences; each one merges with nature in a particular way that will inspire your new life.





purple heron / ˈpɜːpl ˈherən / 1. “area pura” in Latin. 2. it prefers dense vegetation areas. 3. it releases a distinctive cry as it glides through the sky. Can you hear it?

Purple Heron

UP TO 4 BEDROOMS

 TERRACES AND PERGOLAS

 GARDEN AND POOL



TERRACOTA VILLA.

WHERE COLOR ENHANCES A WARM REFUGE AMIDST THE FOREST.

The Terracotta Villa is designed for both privacy and openness. Its front façade, with selectively placed openings, ensures privacy from the street while allowing light in; the rear façade opens widely to a lush garden with large windows, blending indoor and outdoor spaces. This approach offers a secluded, intriguing front and a rear that celebrates natural light and garden views.

The terracotta stucco that graces the house's exterior seamlessly flows indoors, shaping an interior that merges the color's warmth with the landscape's coolness. This blend is further enriched by terraces and pergolas that frame the forest, making nature the central attraction from within.

The landscape design integrates with the natural terrain using terraced stone retaining walls, minimizing excavation and preserving as many existing trees as possible.





UP TO 4 BEDROOMS
 TERRACES AND PERGOLAS
 GARDEN AND POOL



TIMBER VILLA.

WHERE WOOD AND A COURTYARD MERGE THE INSIDE AND THE OUTSIDE FOR AN OPEN LIVING.

stone pine / stam paşın / 1. "pinus pinea" in Latin. 2. native to the Mediterranean region, it has been cultivated since prehistoric times and celebrated for its edible fruit: the pine nuts. 3. it can exceed 25 meters in height. 4. it offers the perfect shade to enjoy a picnic on a sunny day.

Stone Pine





The Timber Villa showcases a striking horizontal design crafted through two expansive floor planes. It features natural wood beams that stretch from the interior to the exterior, morphing into elegant wood pergolas and terraces. This architectural choice fosters a seamless connection between indoor and outdoor spaces, inviting serene and relaxing moments amidst its wooden embrace.

The geometry of these "expanding horizontal planes" shapes a central courtyard within the home's layout, complemented by strategically placed openings in the interior for enhanced courtyard views.

The landscape design features a secluded front garden shielded from the street by a lush strip of vegetation and a rear garden that seamlessly merges with the forest.





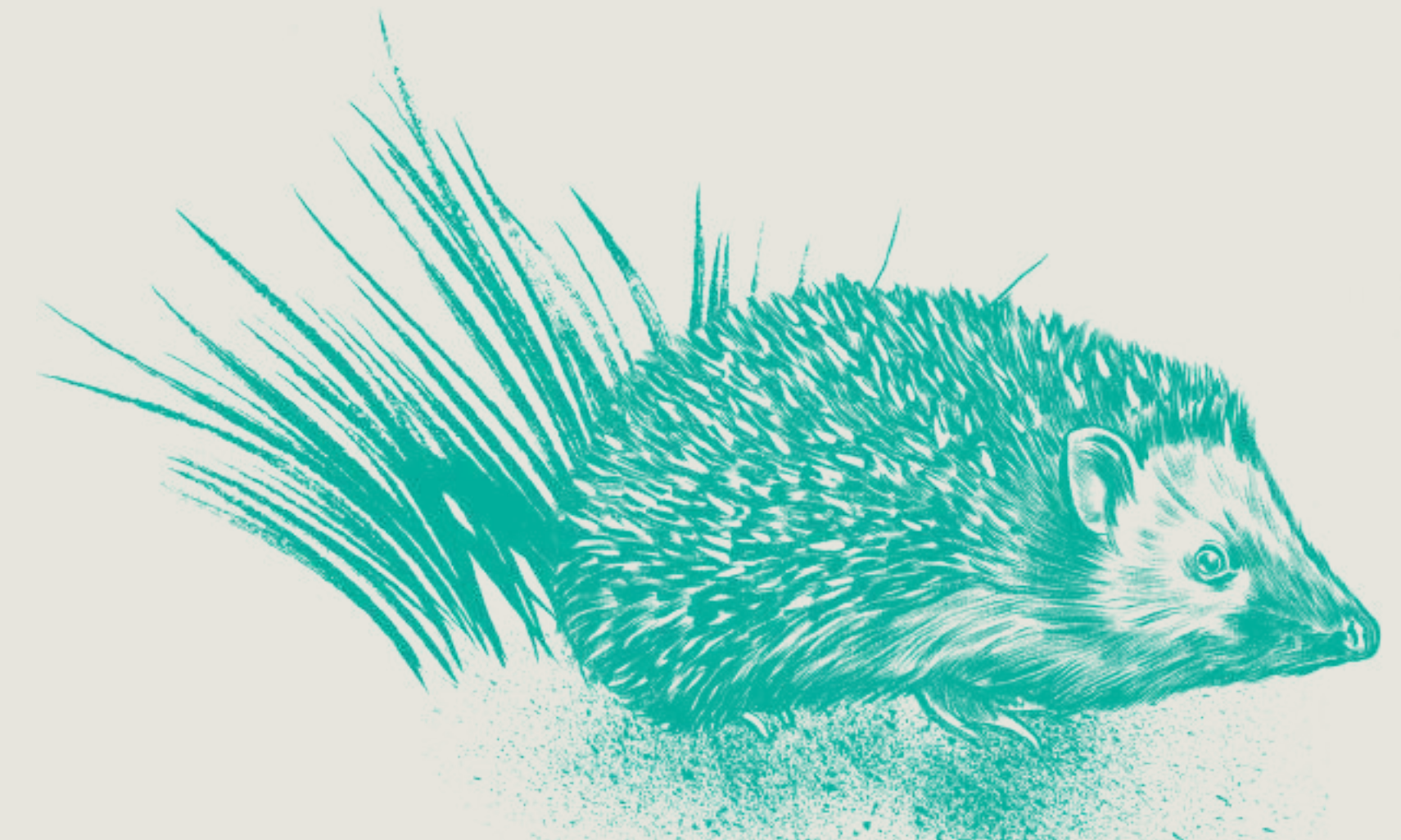
UP TO 4 BEDROOMS

 TERRACES AND PERGOLAS

 GARDEN AND POOL

SAND VILLA.

WHERE VEGETATION SEAMLESSLY
 INTEGRATES INTO THE DECOR.



European Hedgehog

western european hedgehog / wes.tən jʊə.rə'pi:.ən 'hedʒ.hɒg / 1. "erinaceus europaeus" in Latin. 2. usually brownish, most of its body is covered by up to 6,000 spines. 3. it thrives across a wide range of habitats. 4. It considers garden pests as delicacies, playing a crucial role in safeguarding gardens and forests.



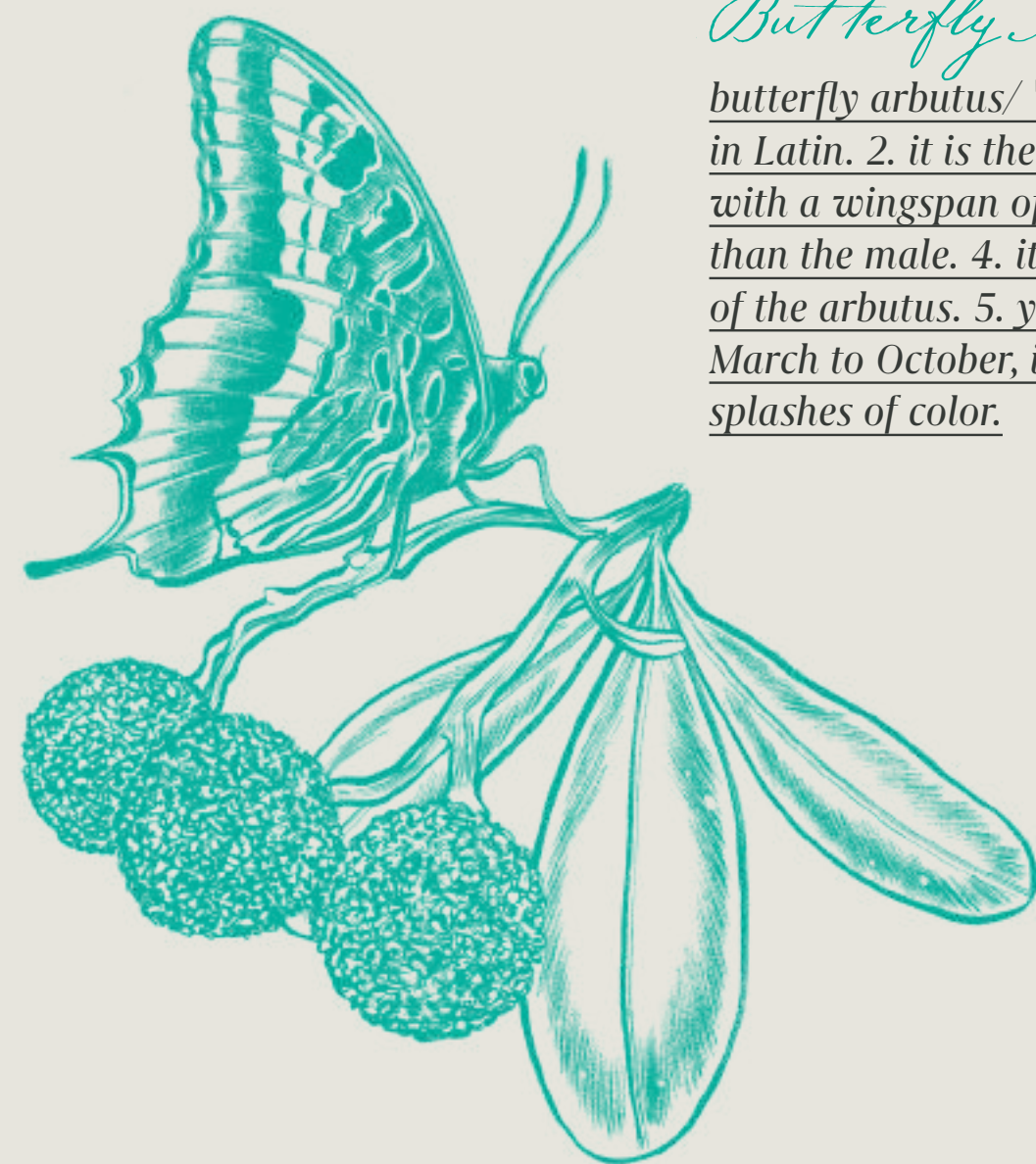
The Sand Villas feature an architecturally bold first floor that is more voluminous than the ground level, characterized by minimalist forms and a palette of light, serene colors.

Contrasting with the sand tones, the dark wood emerges within the interior, on two walls that frame the staircase, creating a box that unites the two floors.

The landscape around these paired villas gently slopes towards the house, creating an immersive effect that feels like living "within" nature itself.



THE VERY NATURE OF DESIGN.



Butterfly Arbutus

butterfly arbutus/ 'bʌtəflaɪ a:bju:təs / 1. "charaxes jasius" in Latin. 2. it is the largest diurnal butterfly in Europe, with a wingspan of up to 8 cm. 3. the female is larger than the male. 4. it feeds exclusively on the ripe fruit of the arbutus. 5. you can observe adults flying from March to October, infusing the atmosphere with vibrant splashes of color.



Timber Villa



Terracota Villa



Terracota Villa

INSPIRING DESIGN ELEVATES YOUR INSPIRATION TO LIVE TO THE FULLEST.

Arcaya welcomes Atelier Andrez Andrez for the interior design project not only for the talent and recognition but also because every project mirrors the natural comfort and style envisioned for each Arcaya home.

With a highly skilled team, Atelier Andrez Andrez stands out for its steadfast and creative portfolio, making it the natural choice for Arcaya. Sofia and her team excel in crafting exclusive projects characterized by exceptional insight, quality and comfort, consistently surpassing client expectations. Their commitment to excellence and attention to detail ensure that every project is executed with perfection and precision.



Sand Villa



Sofia and Sofia, Andrez

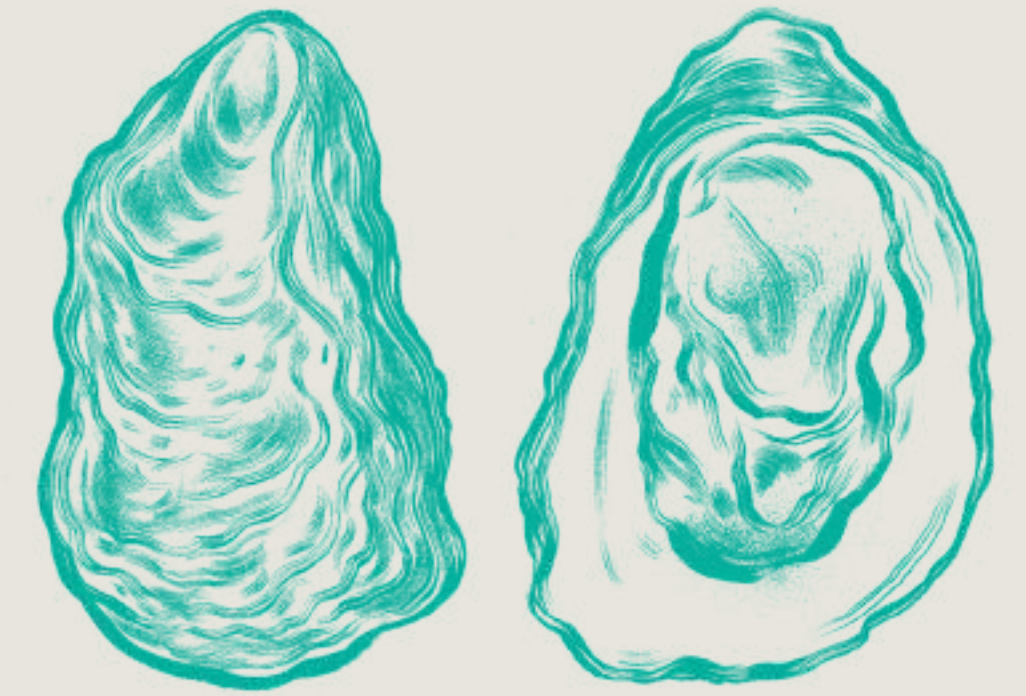
Your new home, coupled with the expert touch of Sofia Andrez, is designed to seamlessly align with your daily lifestyle, featuring soft organic tones and minimalist yet cozy lines. And because interior design and architecture go hand in hand, there is a bespoke project for Terracotta, Timber, and Sand Villas to naturally enhance every inch of your new home.

For an added layer of elegance, quality, and comfort, opt for a villa that comes fully decorated, allowing you to effortlessly move in.



Sand Villa

Timber Villa



THE VERY NATURE

Oyster oyster /ˈɔɪstər/ 1. "ostrea" in Latin. 2. sea creature that lives in a shell. 3. can be eaten cooked or raw. 4. it is part of the Algarve's natural delights. 5. enjoy it!

OF FULFILMENT.



IN VILAMOURA, THE SUN SHINES BRIGHTER, INVITING YOU TO LIVE AND DISCOVER ITS TREASURES.



Arcaya is nestled in the heart of the Golden Triangle, the Algarve's most prestigious area encompassing Vilamoura, Almancil, and luxury resorts.

Arcaya bridges a vibrant lifestyle, from stunning beaches, numerous golf courses, the bustling Marina, and vibrant nightlife, to the essentials of daily life, including schools, hospitals, and services. It provides the luxury of choice within close proximity, making it perfect for year-round living or sun-drenched vacations. Plus, for those with wanderlust, the International Faro Airport is conveniently located just a 20-minute drive away.





Contact us to find out more

+351 289 396 073 ■ **info@qp.pt** ■ **www.qp.pt**

The information contained in this document is solely indicative and may, for technical, commercial, or legal reasons, be subject to changes without prior notice. This real estate project is included in the portfolio of NENUPHAR OCEAN, SIC IMOBILIÁRIA FECHADA, S.A., registered with CMVM with the reference number 2029.



*We had to thank the flowers
For having kept within themselves,
Clear and pure,
That ancient promise
Of a morning to come.**

*Sophia de Mello Breyner Andresen
In "No Tempo Dividido"*

**Free translation*

arcaya
PRIME SUSTAINABLE VILLAGE